

## Betteshanger Park Risk Assessment Form

**ACTIVITY TYPE: Battle Zone Archery**

**LOCATION: Betteshanger Country Park  
Deal, Kent  
CT14 0BF**

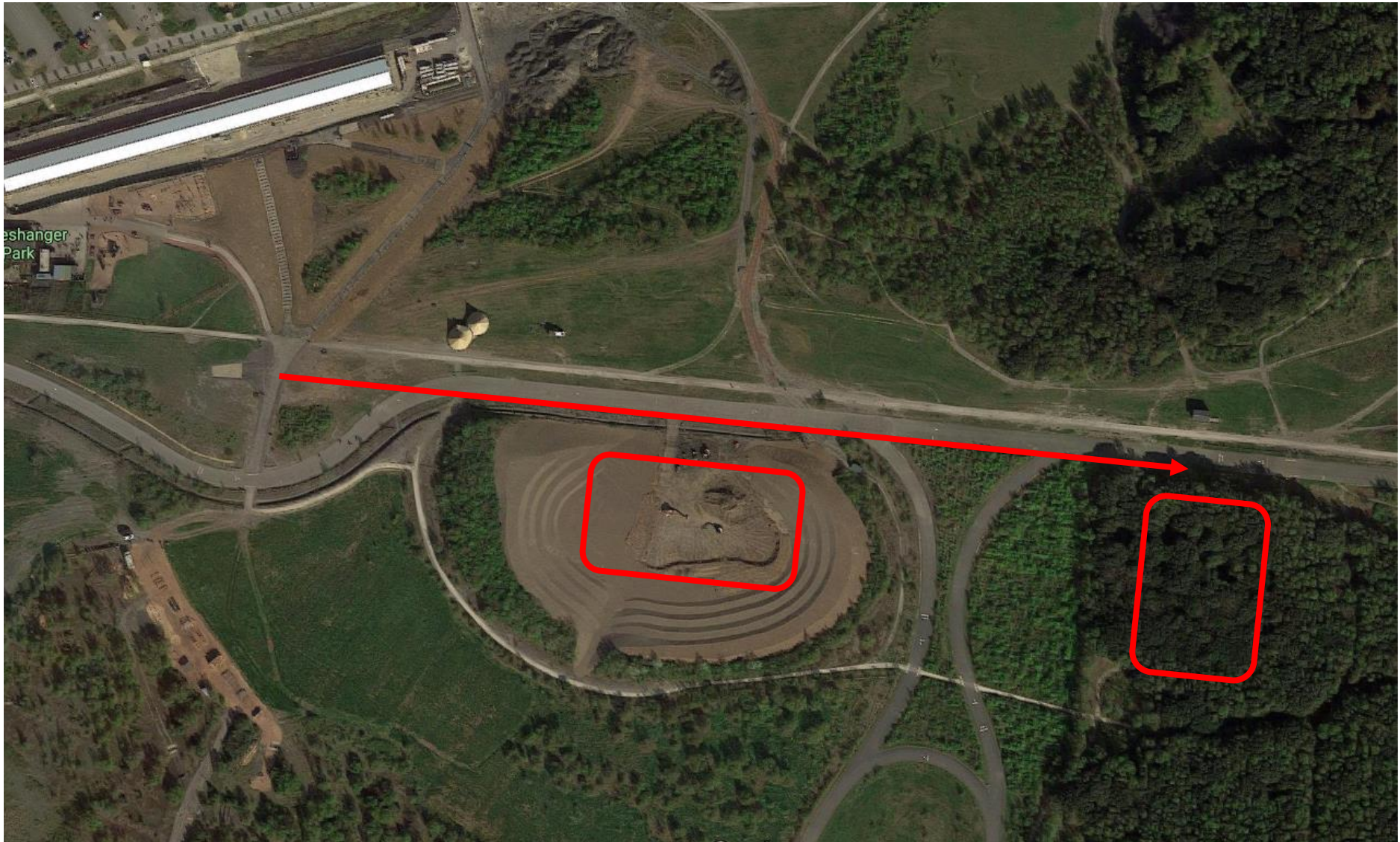
**NO. OF TRAINED EMPLOYED/STAFF/STEWARDS:**

Kieron Driver  
Craig Robertson  
Dominic Plant  
Ian Pettitt

**ASSESSOR (print): KIERON DRIVER**

**ASSESSMENT DATE: 15/ 7 / 2021**

**RISK ASSESSMENT  
Activity Location**



## HAZARD AND RISK IDENTIFICATION

**ACTIVITY:** Battle Zone Archery **LOCATION:** Betteshanger Park

**Persons at Risk** = A: Employee B: Young Person/Trainee C: New/Expectant Mother D: Contractors E: Member of the Public F: Others in the Vicinity

SIGNIFICANT HAZARDS IDENTIFIED	PERSONS AT RISK	RISK RATING			CONTROL MEASURES	DATE ACTIONED and SIGNATURE
		Hazard x Risk = Risk Level				
<b>Being shot by a foam tipped arrow</b>	A - F	2	5	10	Safety masks to be worn at all times when on the court. Failure to comply will result in disqualification. Foam tips to reduce impact on the body	Kieron Driver Craig Robertson 15/6/2021
<b>Falling / running into a foam tipped arrow</b> [impalement, cuts, grazes, bruising]	A - F	2	3	6	Safety brief to include warning customers of risks of arrows on the court and terrain. Taking care of themselves and being visually aware of surroundings on the court is important to stay safe	Kieron Driver Craig Robertson 15/6/2021
<b>Hit by falling cover</b> [Blue stacking Crates]	A - F	3	2	6	Customers instructed in safety brief to not climb onto covers or hides. Any behaviour with equipment deemed too rough by activity instructor will be told to stop via whistle and subsequent disqualification	Kieron Driver Craig Robertson 15/6/2021

SIGNIFICANT HAZARDS IDENTIFIED	PERSONS AT RISK	RISK RATING			CONTROL MEASURES	DATE ACTIONED and SIGNATURE
		Hazard x Risk = Risk Level				
<b>Damaged or broken equipment - various injuries</b>	A - F	3	2	6	All equipment to be checked prior to use by activity instructor/ Betteshanger staff. Any damaged equipment to be removed from use. Damaged equipment during activity to be fixed or removed from service and reported to a senior team member	Kieron Driver Craig Robertson 15/6/2021
<b>Hit by bow string -</b> [cut, graze, bruising]	A,B,C,E	1	3	3	All participants to wear an arm guard on the inner forearm of the arm holding the bow. Safety brief given to participants on how to correctly use the bow and how to tighten arm guard	Kieron Driver Craig Robertson 15/6/2021
<b>Perimeter Safety fencing</b> [trip, fall]	A-F	3	2	6	Boundaries of site explained and shown to participants before activity starts to make them aware of location of fencing. Reminding participants that looking where they are going and being visually aware of surroundings on the court is important to stay safe.	Kieron Driver Craig Robertson 15/6/2021
<b>Participants running into each other</b> [general injury to body]	A,B,C,E	3	3	9	Safety briefing to include spatial awareness and surroundings. A whistle to be used to control unsafe behaviour. Safety mask to be worn at all times when in the court. Reminder that the sport is a non-contact sport	Kieron Driver Craig Robertson 15/6/2021

SIGNIFICANT HAZARDS IDENTIFIED	PERSONS AT RISK	RISK RATING			CONTROL MEASURES	DATE ACTIONED and SIGNATURE
		Hazard	Risk	= Risk Level		
<b>Perimeter Safety fencing</b> [trip, fall]	A-F	3	2	6	Boundaries of site explained and shown to participants before activity starts to make them aware of location of fencing. Reminding participants that looking where they are going and being visually aware of surroundings on the court is important to stay safe.	Kieron Driver Craig Robertson 15/6/2021
<b>Participants running into each other</b> [general injury to body]	A,B,C,E	3	3	9	Safety briefing to include spatial awareness and surroundings. A whistle to be used to control unsafe behaviour. Safety mask to be worn at all times when in the court. Reminder that the sport is a non-contact sport	Kieron Driver Craig Robertson 15/6/2021
<b>Obscured vision/ steaming up of masks causing general injury</b>	A,B,C,E	2	3	6	Warning of face mask to be included in safety briefing. If participant cannot see out of goggles, they are instructed to raise their hand and shout for a marshal to attend them. Alternatively, participants can remove their helmet/goggles to demist them when standing <b>outside</b> of the active zone.	Kieron Driver Craig Robertson 15/6/2021
<b>Falling / tripping over in the area of play</b>	A,B,C,E	3	3	9	Safety briefing to include spatial awareness and surroundings and to be aware of tree roots, rocks, roots and pallets	Kieron Driver Craig Robertson 15/6/2021

SIGNIFICANT HAZARDS IDENTIFIED	PERSONS AT RISK	RISK RATING			CONTROL MEASURES	DATE ACTIONED and SIGNATURE
		Hazard	Risk	= Risk Level		
<b>Being hit by a cyclist / car</b>		4	2	8	Group leader to instruct group to follow the leisure path to the top ensuring they stay together and not to run off from the leader.	Kieron Driver Craig Robertson 15/6/2021
<b>Being hit at close range / point blank</b> [general injury to body]	A,B,C,E	4	2	8	A <b>5</b> meter engagement rule to be explained during safety briefing and to be enforced throughout the session. A whistle to be used to enforce rule. Failure to comply will result in disqualification	Kieron Driver Craig Robertson 15/6/2021
<b>Getting shot in the eye</b>	A-F	5	4	20	Face masks to be worn at all times during play, No one is to remove there mask in the 'shooting area'. If someone needs help they are instructed to raise their hand and shout 'marshal' or their name. Failure to comply will result in immediate disqualification. A whistle to be used to cease play if someone on the pitch removes their mask	Kieron Driver Craig Robertson 15/6/2021

**Please see general site risk assessment for risks associated with whole site**

Risk Rating		
Hazard (Severity)	Value	Risk (Likelihood)
Negligible	1	Unlikely
Slight	2	Possible
Moderate	3	Quite Possible
Severe	4	Likely
Very Severe	5	Very Likely

**Hazard Value x Risk Value = Risk Level**

Ranking of Risk (Risk Level)	
1 – 4	Low Risk
5 – 15	Medium Risk
16 - 25	High Risk

**Low Risk** – risk can be acceptable.

**Medium Risk** – acceptable with adequate control measures in place.

**High Risk** – action must be prioritised and timetabled to reduce risk to an acceptable level.