

## Betteshanger Park Risk Assessment Form

**ACTIVITY TYPE: SHELTER BUILDING / NATURE ACTIVITIES**

**LOCATION:**           Betteshanger Country Park  
Deal, Kent  
CT14 0BF

**NO. OF TRAINED EMPLOYED/STAFF/STEWARDS:**

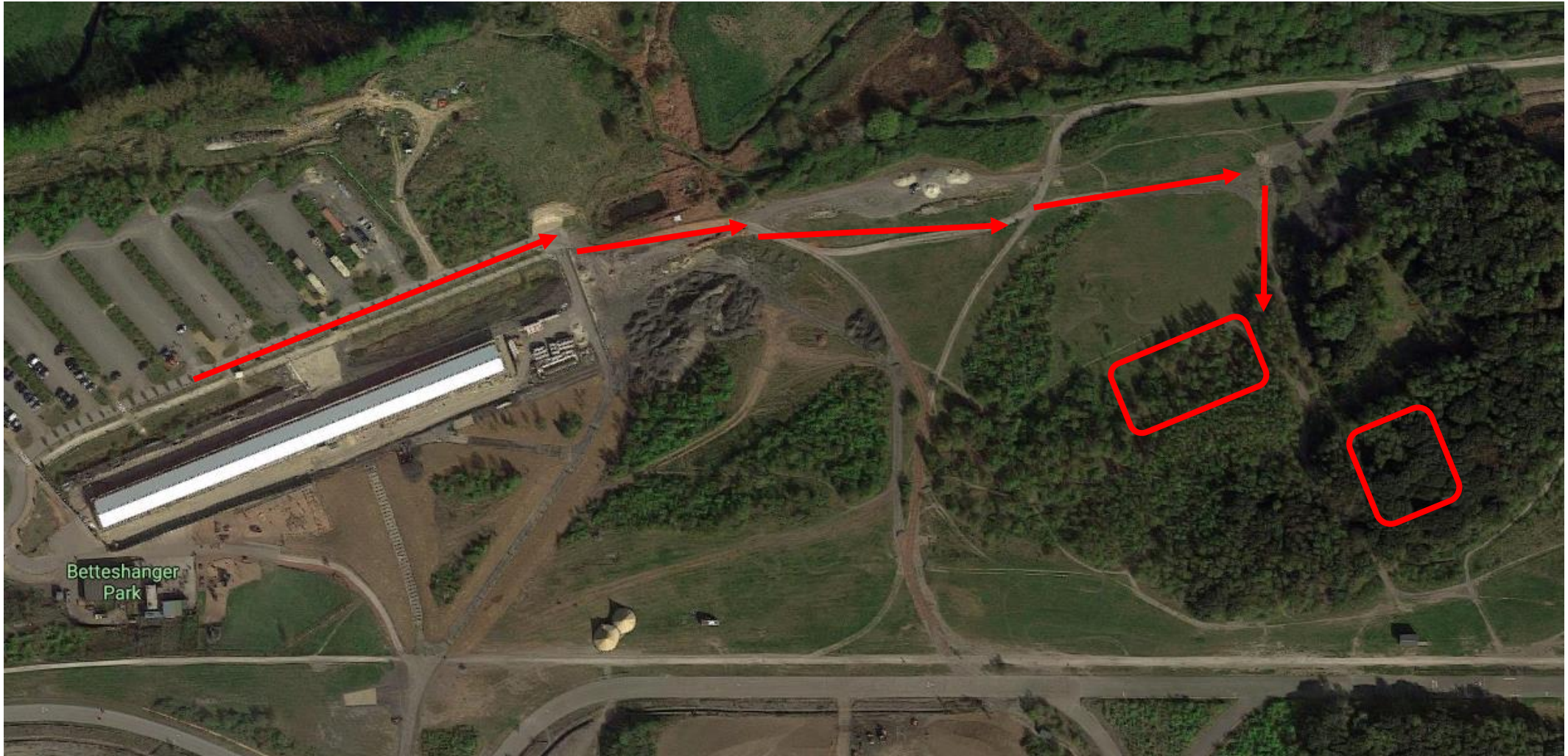
Lucy Smith  
Craig Robertson  
Dominic Plant

**ASSESSOR (print): KIERON DRIVER**

**ASSESSMENT DATE: 15/6/2021**

# RISK ASSESSMENT

## Activity Location



# RISK ASSESSMENT

## HAZARD AND RISK IDENTIFICATION

**ACTIVITY:** SHELTER BUILDING **LOCATION:** BETTESHANGER PARKS

**Persons at Risk** = A: Employee B: Young Person/Trainee C: New/Expectant Mother D: Contractors E: Member of the Public F: Others in the Vicinity

SIGNIFICANT HAZARDS IDENTIFIED	PERSONS AT RISK	RISK RATING			CONTROL MEASURES	DATE ACTIONED and SIGNATURE
		Hazard x Risk = Risk Level				
<b>Trips and trips on poles /falls/Cuts</b>	A - F	2	3	6	First Aid Kits are located at the Park Office as well as at Bike Hire Group leaders to warn group before using forest tracks/ shelter build area of possible uneven ground and branches at eyelevel. No running.	15/6/2021 Kieron Driver
<b>Carrying poles</b> Physical Injuries, Head Injuries, Crush injuries	A - F	2	3	6	First Aid Kits are located at the Park Office as well as at Bike Hire Group leaders to demonstrate safest dragging and lifting techniques to the group before start of build. All group participants warned not to swing poles around.	15/6/2021 Kieron Driver
<b>Risk of strangulation on the ropes</b> used to tie poles together and the tarps to the poles	A - F	2	2	4	First Aid Kits are located at the Park Office as well as at Bike Hire Group leaders to clearly state to participants not to put their own or other participants head through rope loops and knots. Failure to do so will result in removal from the session.	15/6/2021 Kieron Driver
<b>Physical injury from ropes</b> Entanglement, friction burns.	A - F	2	3	6	First Aid Kits are located at the Park Office as well as at Bike Hire Group leaders to clearly state to participants not to put appendages into rope loops and knots. Group leader to warn participants about how to safely handle ropes to avoid friction burn.	15/6/2021 Kieron Driver

SIGNIFICANT HAZARDS IDENTIFIED	PERSONS AT RISK	RISK RATING			CONTROL MEASURES	DATE ACTIONED and SIGNATURE
		Hazard x Risk = Risk Level				
<b>Dismantling shelters</b> Head injuries	A - F	2	4	8	First Aid Kits are located at the Park Office as well as at Bike Hire  Prior to dismantling group leaders to clearly state shelters are to be taken down carefully, one piece at a time, and no one to enter shelter whilst it is being dismantled.	<b>15/6/2021</b> <b>Kieron Driver</b>
<b>Industrial debris from site's previous use as a colliery spoil tip</b>	A - F	3	2	6	Industrial debris is being picked on an ongoing basis. Welcome briefing to all participants about the nature of the site and its varying terrain and features	<b>15/6/2021</b> <b>Kieron Driver</b>
<b>Health of participants unsuitable for activity.</b> Medical Issues/Injury	A - F	2	2	4	Ranger Phone Number on Signs Around the Park as well as on the back of the Park Maps (Located at Bike Hire), Site Staff have radios to keep in contact with one another.  First Aid Kits are located at the Park Office as well as at Bike Hire.	<b>15/6/2021</b> <b>Kieron Driver</b>
<b>Getting lost on route to area</b>	A - F	2	2	4	Before every school/group visit, Welcome briefing to all participants about the nature of the site and about the importance of staying with their group at all times. Emergency phone numbers located at various points in the park and on the back of the park maps Staff to be vigilant at all times	<b>15/6/2021</b> <b>Kieron Driver</b>
<b>Uneven paths on site</b>	A - F	2	2	4	Welcome briefing to all participants about the nature of the site and its varying terrain	<b>15/6/2021</b> <b>Kieron Driver</b>

# RISK ASSESSMENT HAZARD AND RISK IDENTIFICATION

ACTIVITY: SHELTER BUILDING LOCATION: BETTESHANGER PARKS

Risk Rating		
Hazard (Severity)	Value	Risk (Likelihood)
Negligible	1	Unlikely
Slight	2	Possible
Moderate	3	Quite Possible
Severe	4	Likely
Very Severe	5	Very Likely

Hazard Value x Risk Value = Risk Level

Ranking of Risk (Risk Level)	
1 – 4	Low Risk
5 – 15	Medium Risk
16 - 25	High Risk

**Low Risk** – risk can be acceptable.

**Medium Risk** – acceptable with adequate control measures in place.

**High Risk** – action must be prioritised and timetabled to reduce risk to an acceptable level.