



# BETTESHANGER

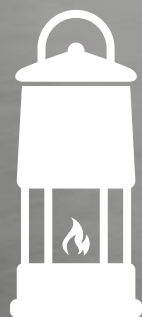
COUNTRY PARK

VENUES FOR HIRE

INTRODUCING

THE  
GLASS  
ROOM  
VENUE

&



THE  
LAMP  
ROOM





# BETTESHANGER

## COUNTRY PARK

LIVE • LEARN • PLAY



### A GLORIOUS EVENTS VENUE

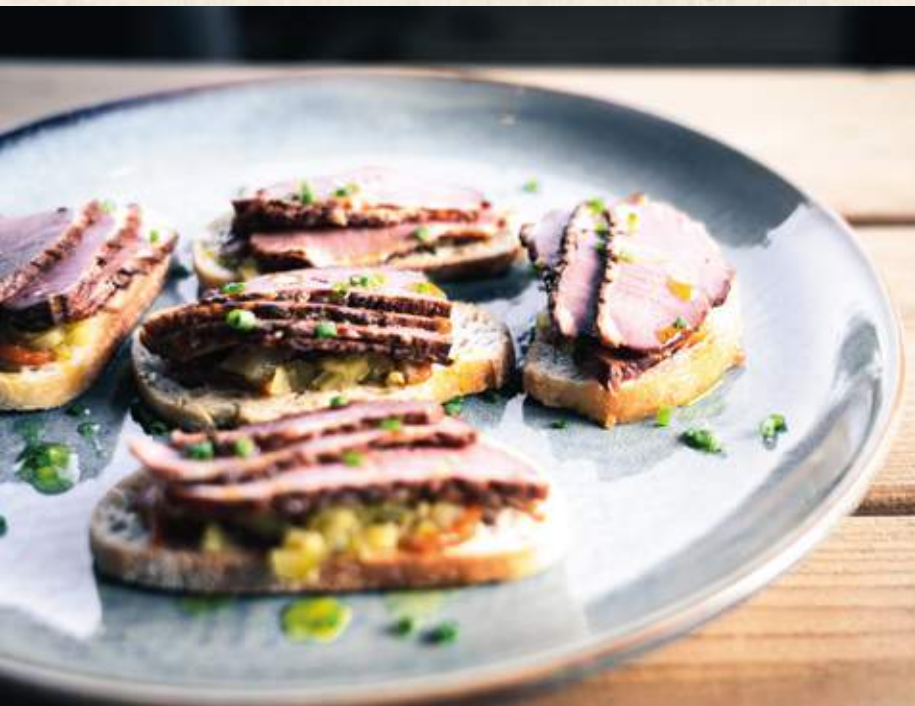
Boasting an incredible selection of private & semi-private party spaces, we can cater for everything from small gatherings to full company outings and weddings.

Our sensational event spaces include The Lamp Room Kitchen + Bar and The Glass Room Venue Space. Our bookings team will be more than happy to tailor any event to your exact requirements and leave you with nothing to do but enjoy time with your guests.











# Available SPACES

1



THE GLASS ROOM

THE LAMP ROOM

2



3



THE OUTDOORS

## CAR PARK



1

### THE GLASS ROOM

**CAPACITY:**  
150 seated or 220 standing.

Banquet style, cabaret style, theatre  
and feasting available

2

### THE LAMP ROOM

**CAPACITY:**  
50 seated inside and 26 outside  
or 80 standing

3

### THE OUTDOORS

**CAPACITY:**  
500 standing or 500 seated in  
concert style



# YOUR *Event* JOURNEY

## ENQUIRE

Get in touch with our bookings team to get your event started!  
Head over to [www.betteshangerpark.co.uk](http://www.betteshangerpark.co.uk)



## TAKE YOUR PICK

Choose from our wide selection of menus and one of our incredible  
spaces to suit your requirements



## BOOK IT

Once we have received your selection, we can get your booking confirmed



## ON THE DAY

Upon arrival at Betteshanger Park, your host will greet you and guide you  
through your event



## ANYTHING ELSE?

Our dedicated team continue with you throughout the day to ensure you  
have everything you need



# Food & DRINK

Our talented in-house events team are on-hand to take care of your food and drink requirements from the planning stage until the day itself.

We are proud to use locally sourced, fresh ingredients to create our bespoke menus. Our fully stocked bar has a late licence, providing the perfect accompaniment to your event.

---

With packages available styled to each type of event,  
our menus range to include;



Want to add something to our packages? Not a problem!  
We will always ensure you have everything you are looking for.





# Weddings

We offer two truly amazing venues, creating the perfect setting for your dream Wedding Day at Betteshanger Country Park.

With photo opportunities across our wild landscapes and access to our amazing new facilities, we offer a truly unique place for you to celebrate your day of 'I Do'.







Available from 1pm, ideal for  
a long afternoon celebration

Caters 80 – 150 seated guests,  
220 standing



### Packages can include;

Arrival Drinks  
BBQ / Feasting Meal / 3 Course Menu  
Prosecco for toasts  
Evening Snack / Buffet  
Licensed Bar until Midnight  
All tables/chairs/linen/cutlery  
A dedicated team to help you plan and  
organise your day

From £41 per person plus room hire  
(date dependent)



THE  
**LAMP  
ROOM**

Available from 4pm, perfect  
for an intimate evening affair

For 40 – 80  
guests standing



### Package can include;

Arrival Drink  
Heavy Canapes / Light Buffet  
Licensed Bar until midnight  
A dedicated team to help you plan and  
organise your evening

From £21 per person plus room hire  
(date dependent)



# Corporate EVENTS

Wake up those morning meetings in a new, exciting venue in Kent.

With plenty of natural daylight and space for those minds to kickstart new ideas, The Glass Room offers a great location for anything from an Away Day to a Training Morning.

Day Delegate Rate includes;



Water, sweets, notepads  
and pens on tables



Morning tea / coffee  
and pastries on arrival



Buffet Lunch



Afternoon tea /  
coffee service



Projector and  
screen hire

From £40



## Team BUILDING

‘WAKE UP AND SHAKE UP!’

Get your team going with a day of activities within  
Betteshanger Country Park.

Packages offer a chance to participate in Instructor Led Mountain Biking, Battlezone Archery, Survival Skills, Archery, Fossil hunting and Geocaching / Orienteering.

Boonies – Tackle our grounds army style assault course with a Personal guide and plan for you.



# Social EVENTS

Looking for the perfect setting for your special occasion?

Look no further!

---

From Baby Showers to Birthday parties, we can host every type of social occasion in either The Lamp Room or The Glass Room.

We have a choice of menus available from 3 Course meals to light finger buffets starting from just £15 per person.



We can tailor your day to suit your event and personalise this to you. Further, if you need help with décor, please let us know as we have the ability to help.

With ample outdoor seating, The Lamp Room has direct access to our play area also which is perfect for larger family gatherings.

The Glass Room also offers use of an outdoor space which is perfect for a Summer BBQ or laid back afternoon in the sun.

We will ensure your day is effortless for you so that you can sit back, enjoy and make it an occasion to remember.





# Christmas Joiner PARTY NIGHTS

Kickstart the festive season at The Glass Room where you can dine and dance into December 2022!

With a feasting style Christmas menu, drink on arrival and DJ until midnight, we are providing the perfect setting for you to gather with friends, colleagues or family.

Join us for a series of Joiner Party nights available to book for groups of 6 or more.

Joiner parties available on Friday 9th/16th and Saturday 10th/17th December.

**£45 per person.**

---

## FANCY SOMETHING PRIVATE?

Choose one of our amazing event spaces to enjoy to yourself.

Choose from either The Lamp Room for something more laid back and intimate or The Glass Room for an amazing party setting!

We can offer our Festive Feast Menu with a variety of drinks packages, DJ should you wish and all the trimmings in between.

Minimum of groups of 30 for The Lamp Room and a minimum of 60 for The Glass Room.

Private parties are available on request Sunday - Thursday evenings or in The Lamp Room on Fridays and Saturdays.





# CHRISTMAS FEAST MENU

---

## Mains Board

---

Roast Crown of Kentish Turkey (GF)  
Pigs in Blankets  
Yorkshire Puddings  
Rosemary Salt Roast Potatoes (GF)  
Maple Roast Winter Vegetables (GF)  
Sautéed Sprouts and Winter Greens with Toasted Chestnuts (GF)  
Thyme infused Turkey Jus (GF)

---

## Individual Vegan Board

---

Zaatar Spiced Roast Cauliflower (VGN) (GF)  
Parsnip Crisps (VGN) (GF)  
Maple Roast Winter Vegetables (VGN) (GF)  
Rosemary Salt Roast Potatoes (VGN) (GF)  
Sautéed Sprouts and Winter Greens with Toasted Chestnuts (VGN) (GF)  
Thyme infused Onion Jus (VGN) (GF)

---

## Dessert Board

---

Traditional Christmas Pudding  
Brandy Butter (GF)  
Chocolate Orange Torte (VGN)  
Vanilla Cream (VGN) (GF)  
Mulled Wine Poached Pear (VGN) (GF)  
Chocolate Sauce (VGN) (GF)

Allergies can be catered for upon request





# BETTESHANGER

COUNTRY PARK


LIVE • LEARN • PLAY


If you would like to make a booking, arrange an event or  
require more information, please email:

**[info@betteshangerparks.co.uk](mailto:info@betteshangerparks.co.uk)**

Or visit our website...

**[WWW.BETTESHANGER-PARK.CO.UK](http://WWW.BETTESHANGER-PARK.CO.UK)**

 **[@BETTESHANGERPARKS](https://www.instagram.com/betteshangerparks)**

 **[@BETTESHANGERCP](https://www.facebook.com/betteshangercp)**